

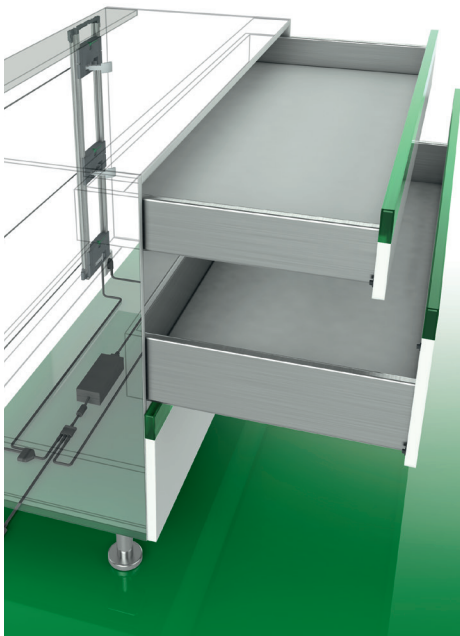
Sensomatic combines handle-free opening
with the ever popular Soft-closing action

**Just tap anywhere on the drawer front and
the drawer opens automatically.**

The Sensomatic is an electro-mechanical opening
system that works with the Dynapro slide system.
A simple installation process creates a superior
drawer system.



Versatile, Efficient, Exciting:
 Lightly touch the front panel and the
 drawers will open as if by magic.
 Fully automatic, electrically powered.



SENSOMATIC OPENING SYSTEM

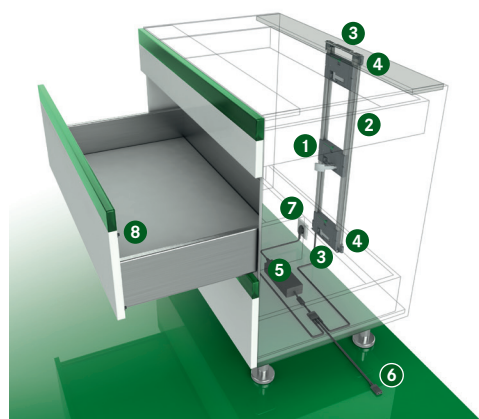
Sensomatic, an electro-mechanical opening system that can be activated by a light touch anywhere on the surface of the drawer front. At the touch, the drawers glide open in one smooth motion.

With the touch-sensitive Sensomatic device all you need is a gentle touch anywhere on the drawer front to automatically open the drawers. The action is steady and precise. The perfect movement for today's functional requirements.

Sensomatic together with Soft-close offers all the advantages of handle free opening with the elegance and functionality of a soft-closing action. These functions together guarantee your operating convenience at the highest level.

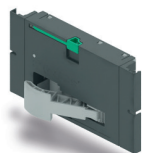
Sensomatic is extremely efficient in regard to power consumption and occupied space. The Sensomatic needs only one drive unit for cabinet widths up to 47 1/4" (1200mm) regardless of the weight. Accessories such as wire baskets, trash can receptacles, or roll out trays can be fitted with the Sensomatic system without modification. It has never been easier to open a drawer and - never easier to close a drawer.

Standard cabinet with horizontal wooden stretcher



- Electro-mechanical opening system
- Sensomatic works with any Dynapro drawer design
- Activated by a light touch anywhere on the drawer front
- One drive unit for cabinets widths up to 47 1/4" (1200mm)
- Soft-closing action pulls the drawer closed
- Ideal for accessories such as wire baskets, waste bins, or roll-out trays
- Full extension for maximum access to drawer contents

1 Opening Unit



	Item No.	PU
For Dynapro	F121100268607	10

PU - 10 pieces, individually packaged

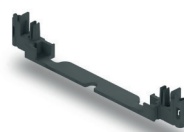
2 Frame Sides, Including Frame Side Cable



Length	Item No.	PU
750mm	F121100285207	10
1170mm	F121100286207	10

PU - 10 pairs

3 Frame Connector



	Item No.	PU
Frame connector	F121100282211	20

4 Fixing Bracket



	Item No.	PU
Fixing bracket	F121100270211	1

5 Power Supply Unit



	Item No.	PU
Power supply unit	F121100269607	10

PU = 10 pieces, individually packaged

One power supply operates up to 30 opening units

6 Connection Cable with 2-way-adapter



Length	Item No.	PU
1000mm	F121100289207	10
1600mm	F121100290207	10
2000mm	F121100291207	10

7 Power Cord, 1.8 m (6')



Type of plug	Item No.	PU
Power cord (USA, CA)	F120069760207	10

8 Spring-loaded Front Bumper

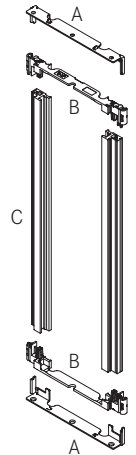
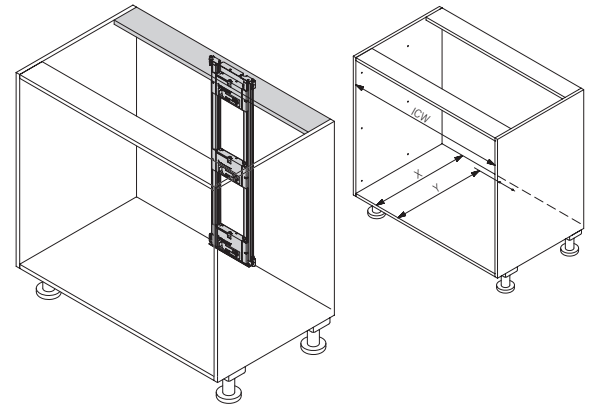
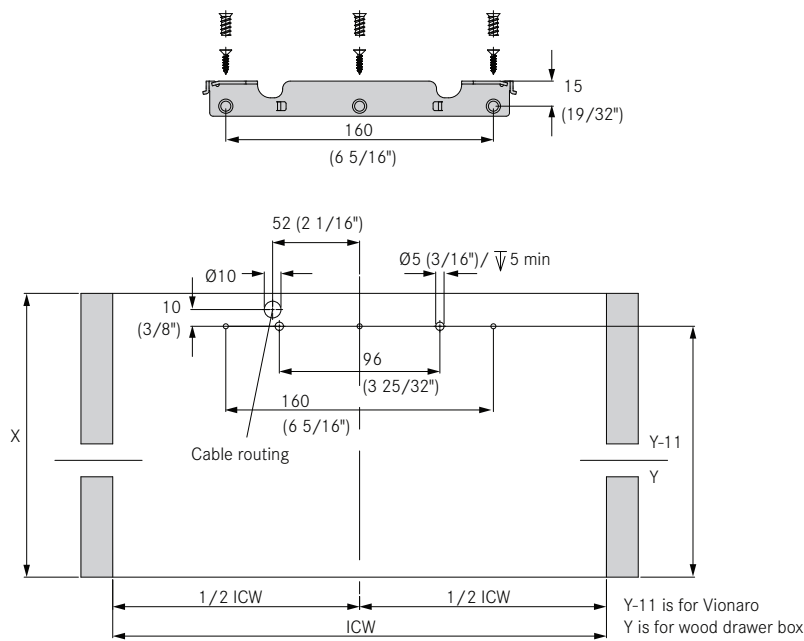


Ø 5mm	Item No.	PU
Front gap 2.2mm	F121100294223	100
Front gap 3mm	F121100295223	100

PU - Packaging unit

Mounting Dimensions

Fixing brackets positioned at top and bottom



Mounting dimensions Dynapro	X	Y	Min ICW
Wood back panel	NL + 15 (19/32")	NL	312 (12 9/32")

Legend

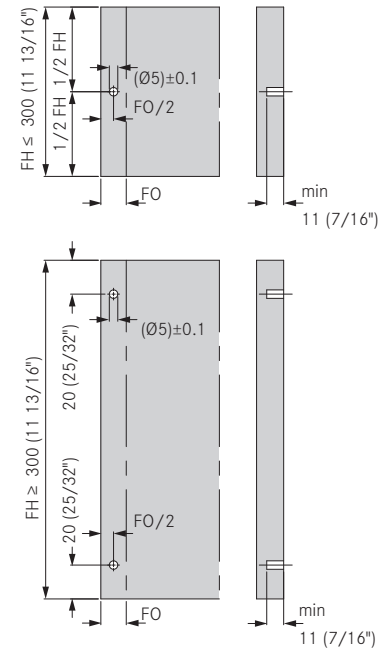
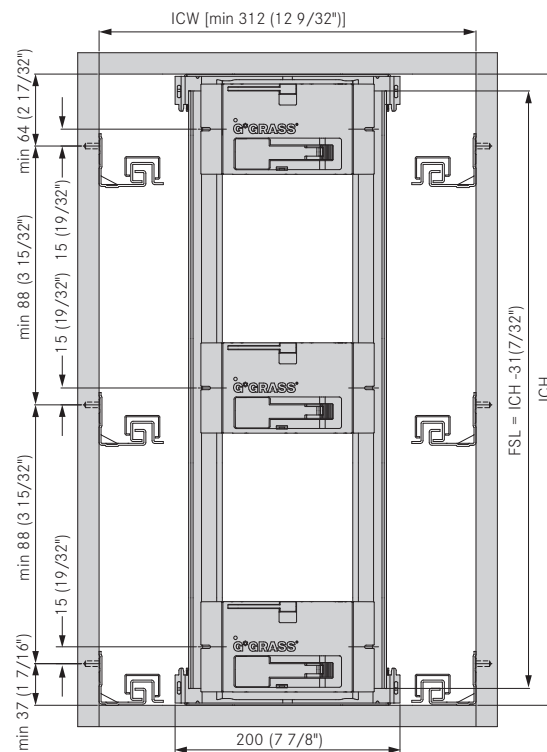
Position of Opening Unit for Dynapro

Position of Front Bumper

A = fixing bracket used at top and bottom
 B = frame connector
 C = frame sides
 ICW = inside cabinet width
 NL = nominal length of cabinet slide
 X = min installation depth
 Y = depth of hole pattern

FSL = frame side length
 ICH = inside cabinet height

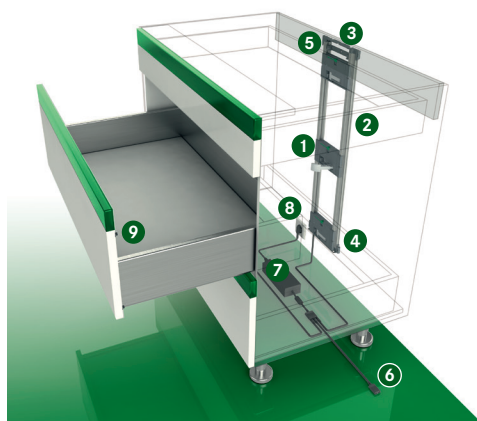
FH = front height
 FO = front overlay



When mounting the heavy-duty slide (132 lbs.), it is necessary to insert 4 front bumpers into the drawer front.

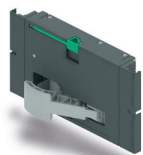
Sensomatic for Dynapro

Standard cabinet with vertical wooden stretcher



- Electro-mechanical opening system
- Sensomatic works with any Dynapro drawer design
- Activated by a light touch anywhere on the drawer front
- One drive unit for cabinets widths up to 47 1/4" (1200mm)
- Full extension for maximum access to drawer contents
- Soft-closing action pulls the drawer closed
- Ideal for accessories such as wire baskets, waste bins, or roll-out trays

1 Opening Unit



	Item No.	PU
For Dynapro	F121100268607	10

PU - 10 Pieces, individually packaged

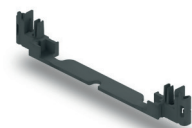
2 Frame Sides, including Frame Side Cable



Length	Item No.	PU
750mm	F121100285207	10
1170mm	F121100286207	10

PU - 10 Pairs

3 Frame Connector



	Item No.	PU
Frame connector	F121100282211	20

4 Fixing Bracket



	Item No.	PU
Fixing bracket	F121100270211	1

5 Rear-mount Fixing Brackets



	Item No.	PU
Flush mount	F121100275207	10

6 Connection Cable with 2-way-adapter



Length	Item No.	PU
1000mm	F121100289207	10
1600mm	F121100290207	10
2000mm	F121100291207	10

7 Power Supply Unit



	Item No.	PU
Power supply unit	F121100269607	10

PU = 10 pieces, individually packaged

One power supply operates up to 30 opening units

8 Power Cord, 1.8 m (6')



Type of plug	Item No.	PU
Power cord (USA, CA)	F120069760207	10

9 Spring-loaded Front Bumper

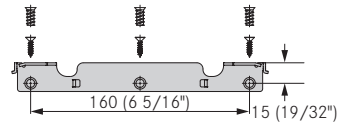
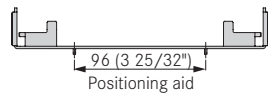


Ø 5mm	Item No.	PU
Front gap 2.2mm	F121100294223	100
Front gap 3mm	F121100295223	100

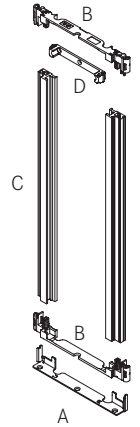
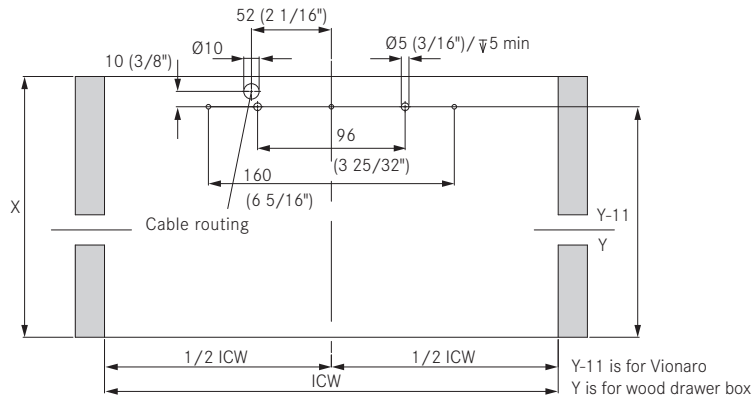
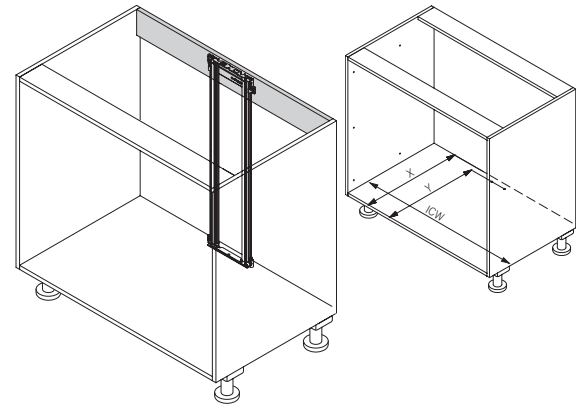
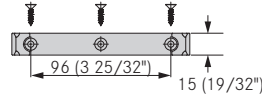
PU - Packaging unit

Mounting Dimensions

Fixing bracket positioned at bottom



Rear-mount fixing bracket (flush mount)



Mounting dimensions Dynapro	X (inside)	Y	Min ICW
Wood back panel	NL + 15 (19/32")	NL	312 (12 9/32")

Legend

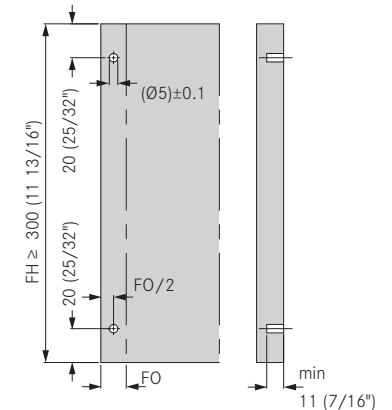
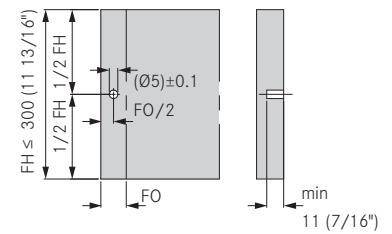
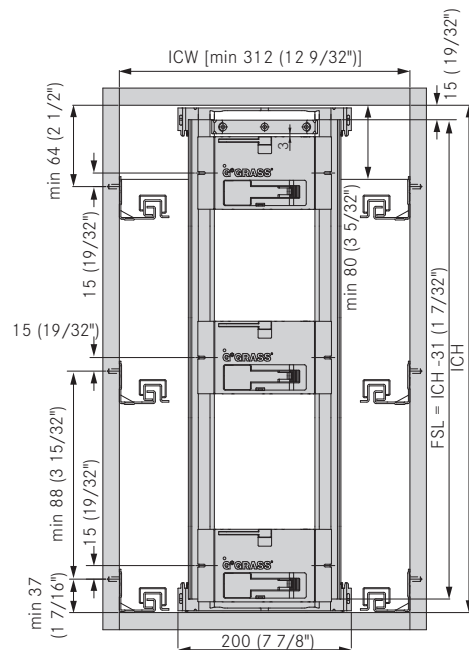
Position of Opening Unit for Dynapro

Position of Front Bumper

- A = fixing bracket used at top and bottom
- B = frame connector
- C = frame sides
- D = Rear mount fixing bracket, flush
- ICW = inside cabinet width
- NL = nominal length of cabinet slide
- X = min installation depth
- Y = depth of hole pattern

FSL = frame side length
ICH = inside cabinet height

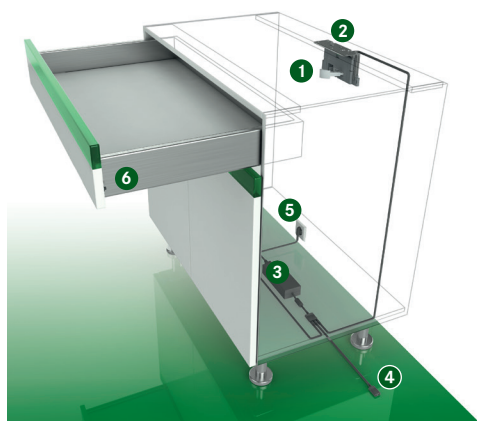
FH = front height
FO = front overlay



When mounting the heavy-duty slide (132 lbs.), it is necessary to insert 4 front bumpers into the drawer front.

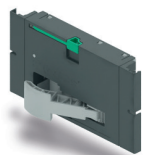
Sensomatic for Dynapro

Single drawer with top mounting



- Electro-mechanical opening system
- Sensomatic works with any Dynapro drawer design
- Activated by a light touch anywhere on the drawer front
- One drive unit for cabinets widths up to 47 1/4" (1200mm)
- Full-extension for maximum access to drawer contents
- Soft-closing action pulls the drawer closed
- Ideal for accessories such as wire baskets, waste bins, or roll-out trays

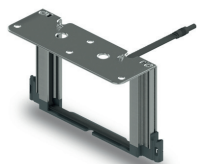
1 Opening Unit



	Item No.	PU
For Dynapro	F121100268607	10

PU - 10 pieces, individually packaged

2 Frame for Top Assembly



	Item No.	PU
Height 120mm (4 23/32")	F121100272207	10

Note: product lead time approximately 12 weeks.

3 Power Supply Unit



	Item No.	PU
Power supply unit	F121100269607	10

PU = 10 pieces, individually packaged. One power supply operates up to 30 opening units

4 Connection Cable with 2-way-adapter



Length	Item No.	PU
600mm	F121100288207	10
1000mm	F121100289207	10
1600mm	F121100290207	10
2000mm	F121100291207	10

5 Power Cord, 1.8 m (6')



Type of plug	Item No.	PU
Power cord (USA, CA)	F120069760207	10

6 Spring-loaded Front Bumper

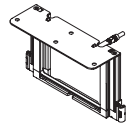
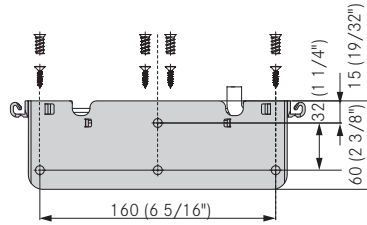
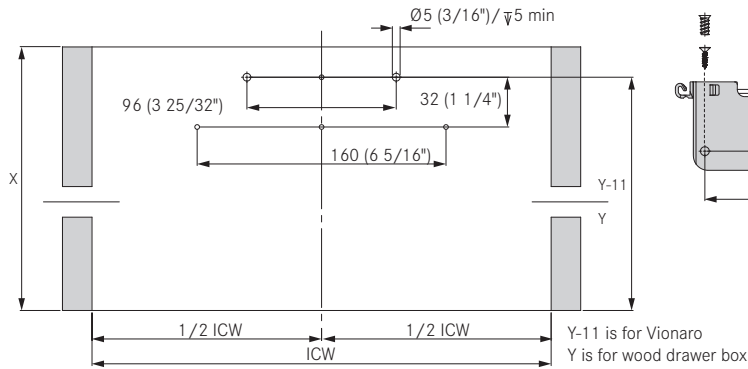
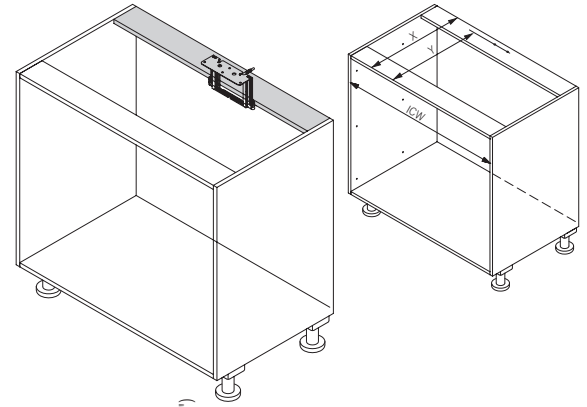
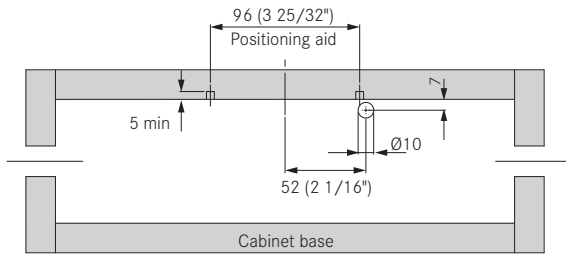


Ø 5mm	Item No.	PU
Front gap 2.2mm	F121100294223	100
Front gap 3mm	F121100295223	100

PU - Packaging unit

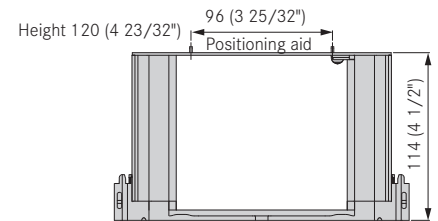
Mounting Dimensions

Back wall cabling



Frame for top mounting

Mounting dimensions Dynapro	X (inside)	Y	Min ICW
Wood back panel	NL + 15 (19/32")	NL	312 (12 9/32")

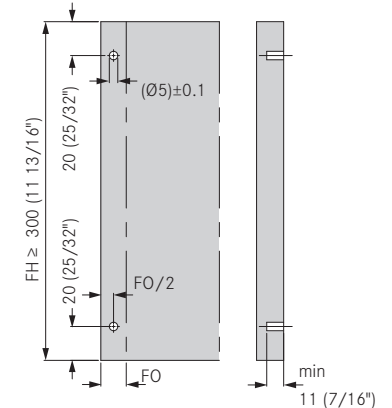
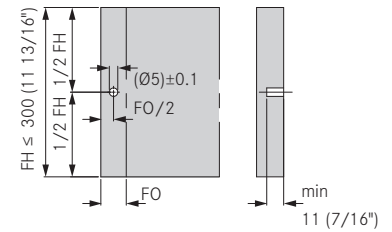
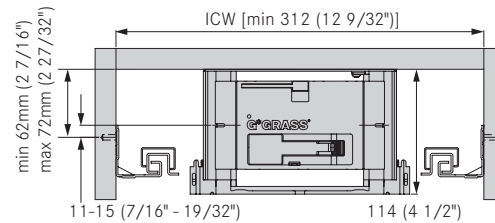


Legend

Position of Opening Unit for Dynapro

Position of Front Bumper

Height 120 (4 23/32")



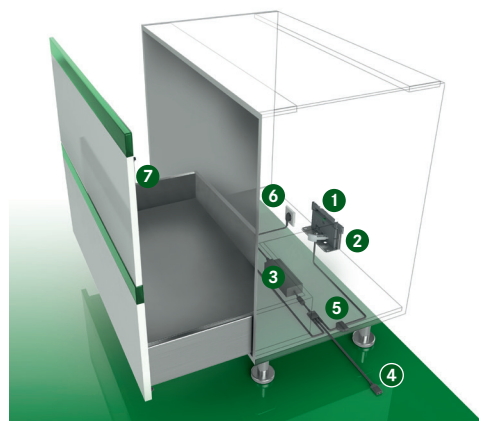
ICW = inside cabinet width
 NL = nominal length of cabinet slide
 X = min installation depth
 Y = depth of hole pattern

FH = front height
 FO = front overlay

When mounting the heavy-duty slide (132 lbs.), it is necessary to insert 4 front bumpers into the drawer front.

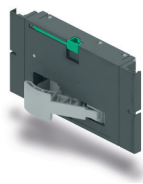
Sensomatic for Dynapro

Waste bin cabinet with bottom panel frame mounting



- Electro-mechanical opening system
- Sensomatic works with any Dynapro drawer design
- Activated by a light touch anywhere on the drawer front
- One drive unit for cabinets widths up to 47 1/4" (1200mm)
- Full-extension for maximum access to drawer contents
- Soft-closing action pulls the drawer closed
- Ideal for accessories such as wire baskets, waste bins, or roll-out trays

1 Opening Unit



	Item No.	PU
For Dynapro	F121100268607	10
PU - 10 pieces, individually packaged		

2 Base Frame



	Item No.	PU
for Dynapro	F121100271207	10

3 Power Supply Unit



	Item No.	PU
Power supply unit	F121100269607	10
PU = 10 pieces, individually packaged One power supply operates up to 30 opening units		

4 Connection Cable with 2-way-adapter



Length	Item No.	PU
1000mm	F121100289207	10
1600mm	F121100290207	10
2000mm	F121100291207	10

5 4-way-adapter



Type of plug	Item No.	PU
4-way-adapter	F121100293207	10

6 Power Cord, 1.8 m (6')



Type of plug	Item No.	PU
Power cord (USA, CA)	F120069760207	10

7 Spring-loaded Front Bumper



Ø 5mm	Item No.	PU
Front gap 2.2mm	F121100294223	100
Front gap 3mm	F121100295223	100

Sensomatic Kit



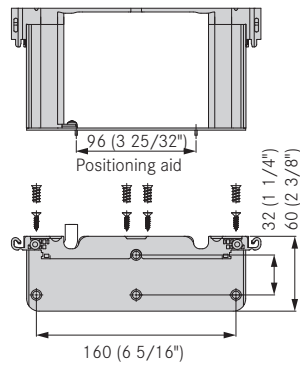
Set includes:

Opening unit: 1 Power cord: 1
Base frame: 1 Front bumpers: 4
Power supply unit : 1 (F121100294223)

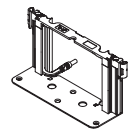
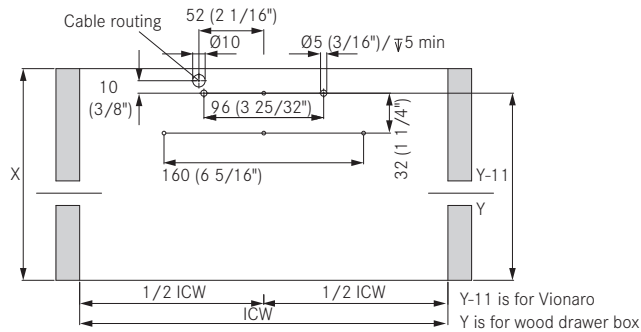
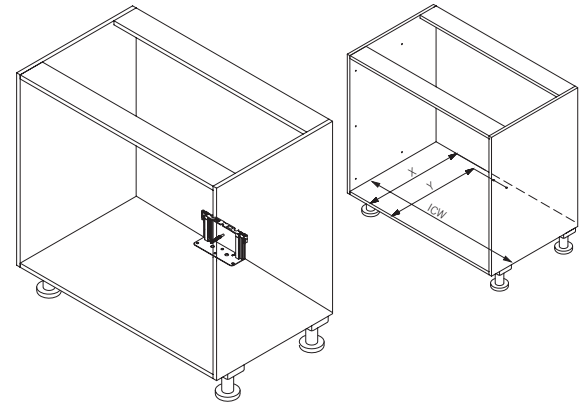
	Item No.	PU
For Dynapro	F121100697201	1
PU = 1 set		

PU - Packaging unit

Mounting Dimensions



Base mounting



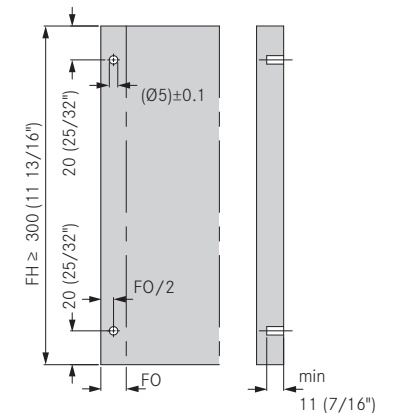
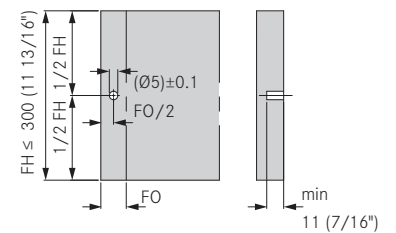
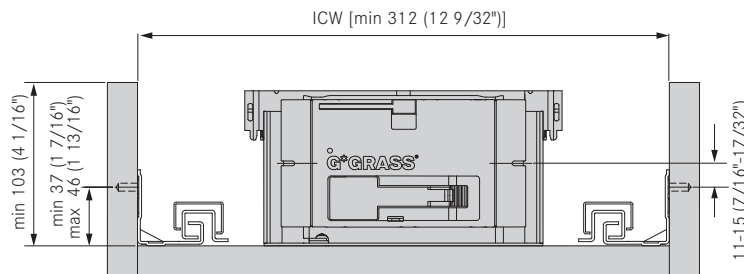
Base frame

Mounting dimensions Dynapro	X (inside)	Y	Min ICW
Wood back panel	NL + 15 (19/32")	NL	312 (12 9/32")

Legend

Position of Opening Unit for Dynapro

Position of Front Bumper



ICW = inside cabinet width
 NL = nominal length of cabinet slide
 X = min installation depth
 Y = depth of hole pattern

FH = front height
 FO = front overlay

When mounting the heavy-duty slide (132 lbs.), it is necessary to insert 4 front bumpers into the drawer front.



GRASS America Inc.
1202 NC Highway 66 South
Kernersville, NC 27284

Phone: 1-800-334-3512
Fax: 1-800-525-8406

www.grassusa.com
info@grassusa.com

GRASS Canada Inc.
10 Newgale Gate, Unit 7
Toronto, ON M1X 1C5

Phone: 1-800-461-4975
Fax: 1-416-335-5907

www.grasscanada.com
info@grasscanada.com

