



TIOMOS

HINGE SYSTEM



TIOMOS
FULL CATALOG

ENGINEERED FOR TOMORROW

TIOMOS represents the culmination of decades of Grass know-how and experience. Grass engineers have reconceptualized and developed every detail and function of this line from the bottom up. The result is an elegant movement system that already meets tomorrow's technical and functional requirements. Robust, soft-closing, and fully adjustable, no other hinge offers as much design flexibility as Tiomos.

TIOMOS SPECS & INSTALLATION DIMENSIONS

- Degree of Opening: 110°, 120°, 155°, 95°
Cup Diameter: 35mm
Cup Depth: 12.6mm (1/2")
Drilling Pattern: 42mm, 45mm, and 42/45mm (Impresso)
Mounting Type: Screw-on, Dowelled, and Impresso (tool-free)
Application: Face Frame, Frameless
Overlay: Full, Overlay, Half, and Inset

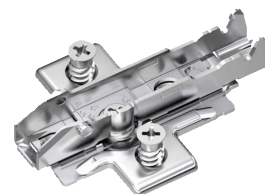
Diameter of Mounting Hole: 5mm pre-drill, #6 x 5/8" FHP - Wood Screw, Nickel Plated and 8mm Dowell

- Closing: Soft-close, Self-close, and Free-swing
Soft-close Adjustment: Tool-free - Light, Medium, and Strong settings
Adjustments: Height ($\pm 2\text{mm}$), Side ($\pm 2\text{mm}$), and Depth ($+3/-2\text{mm}$)
Material: Steel with Corrosion Resistant Finish
Min Door Thickness: 16mm (5/8")
Max Door Thickness: 24mm (15/16")
Door Material: Wood or Wood Type
Bulk Packaging: 25, 50, 100, and 150

Multiple Baseplate Options



In-line

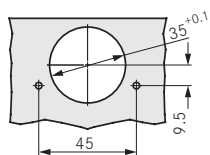


Standard Winged

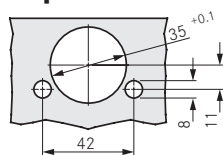


Face Frame Adapter

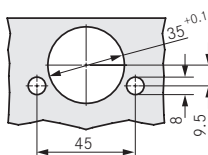
Screw-on



Impresso



Dowelled



TIOMOS Hinge System's wide selection of hinges and specialty hinges cover most application needs. Tiomos features 3 dimensional adjustment mechanisms for height, width, and depth. The soft-close damper is cleverly concealed in the hinge arm and offers three levels of closing pressure.



TIOMOS
VIRTUAL TOUR

- Adjustable 3-tier soft-close mechanism integrated and concealed in the hinge arm
- Continuous, smooth closing action regardless of the door size, weight, or materials
- Soft-close mechanism can be adjusted easily and without tools, even after doors are installed
- Wide selection of hinges and specialty hinges cover all application needs
- 3-dimensional adjustment
- Soft-close, Self-close, and Impresso hinges for frameless or face frame cabinets

TIOMOS meets and exceeds ANSI/BHMA A156.9 Grade 2 testing requirements.

Depth adjustment (+3/-2mm)

is smooth and self-locking via worm screw.

Easy height adjustment (± 2 mm)

via hinge arm on baseplate

Side adjustment (± 2 mm)

with overturn stop

Integrated damper adjustment

with 3 Soft-close settings. Adjustment system is concealed in the hinge arm.

Improved Kinematic reduces opening force and minimizes reveals

Ergonomic clip

release with audible locking

Cup depth 12.6mm (1/2")

Tiomos Styles

42mm pattern, Dowelled
45mm pattern, Screw-on & Dowelled
42/45mm pattern, Impresso

Hinges Per Door

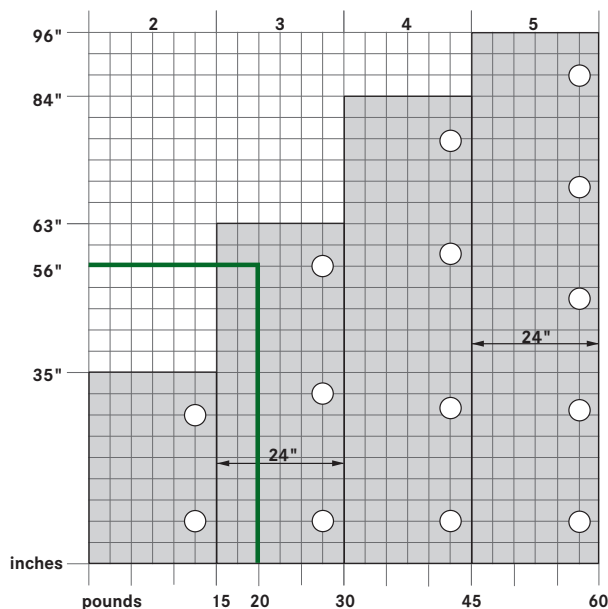
The number of hinges is determined by the door height, door weight, quality of the door material, and the fixing of the cup and base plate.

The load and height data refer to 24" standard door widths.

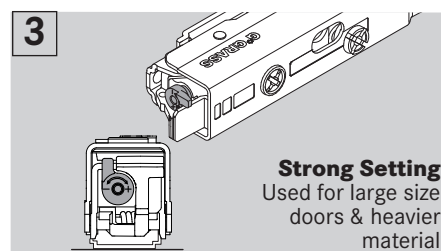
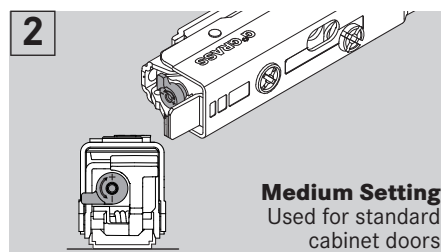
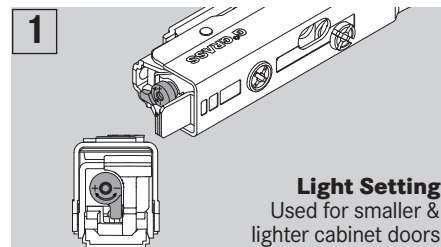
The table refers to hinges with and without integrated dampers.

Grass strongly recommends a trial mount for all hinges and base plates.

Attach base plates using all available screw holes.



Soft Close Adjustment



Example:

For doors measuring 56" x 24" and weighing 19 lb, Grass recommends the installation of 3 hinges. Note: The distance between the top and bottom hinge must be greater than the width of the door. The Tiomos hinge meets and exceeds the minimum requirements of ANSI/BHMA A156.9 Standard.