



## CLOSET TUBING

### KV ROUND CLOSET TUBING

KV 660  
Stainless Steel

KV 660 tubing 1-1/16" O.D. x 29/32" I.D.  
Stainless Steel coated or brass look steel tubing.  
Wall thickness: .087" (2.21mm)

KV 770 tubing 1-1/16" O.D. x 27/32" I.D.  
Chrome look steel tubing.  
Wall thickness: .109" (2.77mm)

KV 770 tubing 1-5/16" O.D. x 1-3/32" I.D.  
Chrome look steel tubing.  
Wall thickness: .109" (2.77mm)

<u>Code</u>	<u>Finish</u>	<u>Length</u>	<u>O.D.</u>	<u>List/ea</u>
660-8	Stainless Steel	8'	1-1/16"	\$ 90.41
660-12	" "	12'	1-1/16"	137.53
770-6-1116	Chrome	6'	1-1/16"	123.64
770-8-1116	" "	8'	1-1/16"	164.93
770-12-1116	" "	12'	1-1/16"	247.29
770-6-1516	" "	6'	1-5/16"	135.58
770-8-1516	" "	8'	1-5/16"	180.67
770-10-1516	" "	10'	1-5/16"	232.09
770-12-1516	" "	12'	1-5/16"	283.99

### SNAP-IN END CAPS FOR 1-5/16" TUBING

Bright Chrome.  
50 per box.



#732

<u>Code</u>	<u>Description</u>	<u>List/ea</u>
732	End Cap for 1-5/16" Tubing	\$ 2.54

## CLOSET HARDWARE

### ECONOMY ROUND CLOSET TUBING

1750 Chrome  
1-5/16" O.D.

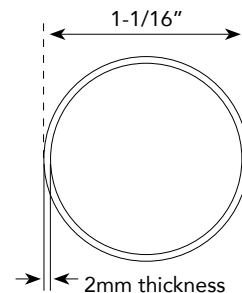
#### Economy Round Tubing

1-5/16" O.D. x 1-5/32" I.D. Wall thickness: .079"

<u>Code</u>	<u>Length</u>	<u>O.D.</u>	<u>I.D.</u>	<u>List/ea</u>
1750-6	6'	1-5/16"	1-5/32"	\$ 37.71
1750-8	8'	1-5/16"	1-5/32"	47.44
1750-10	10'	1-5/16"	1-5/32"	62.01
1750-12	12'	1-5/16"	1-5/32"	85.32

### HEAVY DUTY CLOSET RODS

Steel, Chrome finish



Packed: 5 each/box

<u>Code</u>	<u>Description</u>	<u>List/ea</u>
1116-6CR	1-1/16" x 6', Chrome	\$ 38.90
1116-8CR	1-1/16" x 8', Chrome	42.66
1116-10CR	1-1/16" x 10', Chrome	51.44
1116-12CR	1-1/16" x 12', Chrome	64.73

### ROUND CENTER SUPPORT FOR CLOSET RODS



Chrome plated finish available for  
1-1/16" and 1-5/16" diameters.

Oil R Bronze, Satin Nickel and  
Dull Brass available for 1-5/16"  
diameter.

<u>Code</u>	<u>Diameter</u>	<u>Finish</u>	<u>List/ea</u>
CRCS-78-CP	1-1/16"	Chrome Plated	\$ 4.51
CRCS-88-CP	1-5/16"	Chrome Plated	8.20
CRCS-88-ORB	1-5/16"	Oil R Bronze	5.96
CRCS-88-SN	1-5/16"	Satin Nickel	6.85
CRCS-88-DB	1-5/16"	Dull Brass	6.85



## CLOSET HARDWARE

### FLANGES FOR 1-1/16 O.D. TUBING



860EP, 83320-CR



850EP, 83340-CR

632KV  
with  
5mm pins

Steel flanges for 1-1/16" O.D. steel tubing. Screw holes on 2" centers. Screws included. Chrome or Brass look.

Code	Finish	Description	Ctn	List/ea
860EP	Chrome	Closed Flange	25 ea.	\$ 4.73
83320-CR	Chrome	Closed Flange	50	4.50
850EP	Chrome	Saddle Flange	25	5.59
83340-CR	Chrome	Saddle Flange	50	4.99
632KV	Chrome	End Flange w/ 5mm pins	100	7.40

### FLANGES FOR 1-5/16 O.D. TUBING



861EP



851EP

Flanges for 1-5/16" O.D. steel tubing. Chrome plated steel. With screws.

Code	Finish	Description	Ctn	List/ea
861EP	Chrome	Closed Flange	50 ea.	\$ 9.15
851EP	Chrome	Saddle Flange	25	13.16

### REV-A-SHELF CLOSET RODS AND FLANGES

The 1-5/8" diameter poles are easy to install when using the matching pole caps (sold separately) that snap into standard system 32mm pattern holes.



8' Closet Rods, Chrome finish.

Code	Description	Finish	List/ea
CRSL-96-CR-1	8' L, 1-5/8" dia.	Chrome	\$ 132.02

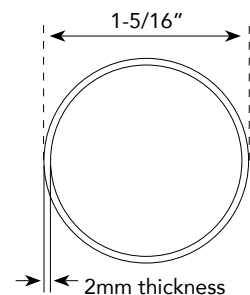
Dowel mount: 32mm (1-1/4") closet system flanges with 5mm dowel pins. Chrome finish. Mounting hardware included.



Sold per pair: includes (1) open and (1) closed end cap.

Code	Description	Finish	List/pr
CRCSL-CR-1	Pole end caps	Chrome	\$ 20.45

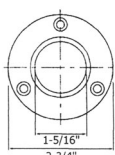
### ROUND ALUMINUM CLOSET RODS



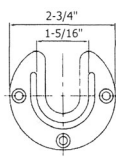
Packed: 20 each/box

Code	Description	List/ea
1516DN-8	1-5/16" x 8', Dull Nickel	\$ 62.54
1516DB-8	1-5/16" x 8', Dull Brass	59.00
1516ORB-8	1-5/16" x 8', Oil R Bronze	93.01
1516MB-8	1-5/16" x 8', Matte Black	62.54

See flanges for above rods next page.

**CLOSET HARDWARE****FLANGES, SCREW-IN, FOR 1-5/16" ROUND ROD**

83310 Closed



83350 Open

Packed: 100 each/box

Code	Description	Finish	List/ea
83310-DN	Closed Flange	Dull Nickel	\$ 6.95
83310-DB	Closed Flange	Dull Brass	6.37
83310-ORB	Closed Flange	Oil R Bronze	7.63
83310-CR	Closed Flange	Chrome	6.68
83310-MB	Closed Flange	Matte Black	7.49
83350-DN	Open Flange	Dull Nickel	\$ 8.43
83350-DB	Open Flange	Dull Brass	8.43
83350-ORB	Open Flange	Oil R Bronze	9.86
83350-CR	Open Flange	Chrome	6.87
83350-MB	Open Flange	Matte Black	7.74

**FLANGES W/ 5MM PINS, FOR 1-5/16" ROUND ROD**

83351 Open



83311 Closed

Code	Description	Finish	List/ea
83311-DN	Closed, w/ 5mm pins	Dull Nickel	\$ 6.00
83311-DB	Closed, w/ 5mm pins	Dull Brass	6.00
83311-ORB	Closed, w/ 5mm pins	Oil R Bronze	5.95
83311-CR	Closed, w/ 5mm pins	Chrome	6.74
83311-MB	Closed, w/ 5mm pins	Matte Black	5.74
83351-DN	Open, w/ 5mm pins	Dull Nickel	\$ 6.07
83351-DB	Open, w/ 5mm pins	Dull Brass	5.56
83351-ORB	Open, w/ 5mm pins	Oil R Bronze	6.08
83351-CR	Open, w/ 5mm pins	Chrome	6.74
83351-MB	Open, w/ 5mm pins	Matte Black	5.74

**KV OVAL CLOSET TUBING**

880

881 flange  
front back

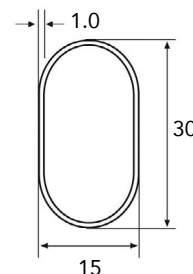
Strong oval shaped tubing is made of heavy gauge steel. Welded seam adds additional strength. Easy to cut. Chrome-look finish. 30mm H x 15mm W x 1.2mm thick.

Flange has 5mm anchor pins to fit 32mm mounting hole patterns. Also has screw hole for extra strength. Chrome look finish. 1-3/4" H x 3/4" W.

Code	Description	Ctn	List/ea
880-8	8' Chrome Oval Tubing	1 ea.	\$ 28.77
881	Flanges for Oval Tubing	50	2.31

**OVAL CLOSET RODS**

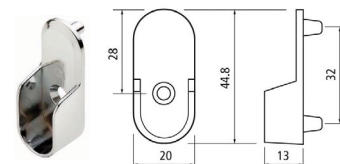
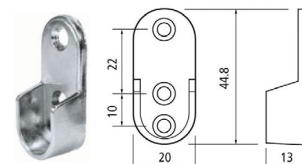
Seamless Steel, 8' lengths

Chrome Plate  
Thickness = 1mm

Code	Description	Ctn	List/ea
30X15-8	8' Chrome Oval Tubing	10 ea.	\$ 21.07
30X15-12	12' Chrome Oval Tubing	10	29.60

**FLANGES FOR OVAL RODS**

Chrome Plate

C8339  
w/ 5mm pinsC8339200300  
no pins

Code	Description	Ctn	List/ea
C8339	Chrome, 5mm pins	1000	\$ 1.07
C8339200300	Chrome, no pins	1000	1.69

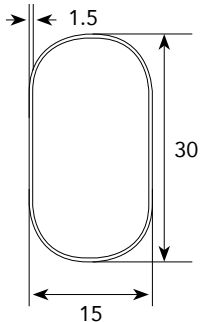


## CLOSET HARDWARE

### OVAL ALUMINUM CLOSET RODS



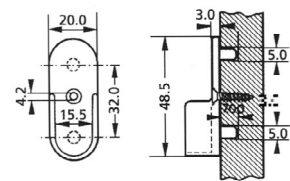
15mm x 30mm,  
1.5mm thick



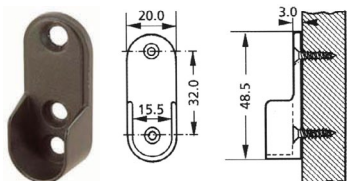
Packed: 20 each/box

<u>Code</u>	<u>Description</u>	<u>List/ea</u>
30X15DN-8	8', Dull Nickel	\$ 39.57
30X15ORB-8	8', Oil R Bronze	39.50
30X15MB-8	8', Matte Black	39.50

### FLANGES FOR OVAL ROD



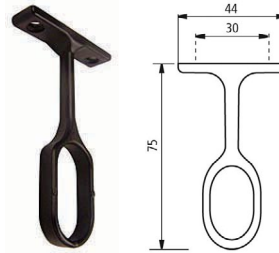
83391  
5mm pin



83392  
Screw-on

<u>Code</u>	<u>Description</u>	<u>Finish</u>	<u>List/ea</u>
83391DN	5mm pins	Dull Nickel	\$ 2.73
83391ORB	5mm pins	Oil R Bronze	2.73
83391MB	5mm pins	Matte Black	2.66
83392DN	Screw-On	Dull Nickel	\$ 2.53
83392ORB	Screw-On	Oil R Bronze	2.51
83392MB	Screw-On	Matte Black	2.67
CRS-56-BK	5mm pins	Matte Black	\$ 2.02
CRS-54-BK	Screw-On	Matte Black	1.95

### OVAL CENTER SUPPORTS FOR CLOSET RODS



Oval center supports  
Overall length: 2.95"  
(75mm)

<u>Code</u>	<u>Finish</u>	<u>List/ea</u>
661CH	Polished Chrome	\$ 2.50
661DN	Dull Nickel	1.97
661ORB	Oil R Bronze	2.03
CRCS-58-BK	Matte Black	3.61

### KV NO. 2 EXTENSION CLOSET ROD



Adjustable rods to fit closet to 144" wide. Has an improved end flange to simplify installation to hook rail. Rods individually packed in polybags. Bright Nickel Plate Finish. One each per bag.

<u>Code</u>	<u>Description</u>	<u>List/ea</u>
KV2-30	Closet Rod, 30" to 48"	\$ 13.71

### KV No. 29201 CENTER SUPPORT



Fits KV #2 and similar closet rods to provide additional support for heavy loads. Anochrome Finish.

12 ea/box.

<u>Code</u>	<u>Description</u>	<u>List/ea</u>
29201NP	Center Support, 2-41/64" H	\$ 4.32

**CLOSET HARDWARE****WADDELL HARDWOOD SOCKETS**

Hardwood clothes pole sockets are designed to anchor the end of standard 1-3/8" wooden clothes poles. Heavy Duty.

**410R**  
Heavy Duty Socket

<u>Code</u>	<u>Description</u>	<u>Ctn</u>	<u>List/st</u>
410R	Heavy Duty Sockets, 1-3/8"	20 sts	\$ 5.02

**BAINBRIDGE PLASTIC  
POLE SOCKETS**

1323WH

1-3/8" Plastic pole sockets packed 1 pair per bag, 500 bags per box with screws. White plastic.

<u>Code</u>	<u>Description</u>	<u>Ctn</u>	<u>List/pr</u>
1323WH	Plastic Sockets, 1-3/8"	500 pr	\$ 1.22

**CLOSET RODS**

Solid Hemlock  
in 8' lengths



138-8

<u>Code</u>	<u>Description</u>	<u>Ctn</u>	<u>List/ea</u>
138-8	1-3/8" x 8' Rods	10 ea.	\$ 48.74

**KV No. 1 CLOTHING CARRIER**

KV1

Double the hanging space in any closet with this ball-bearing clothing carrier. Pull, and the entire carrier slides out into the room. A sliding sleeve allows up to 6" adjustment in length. Bright Nickel Plate finish. 1 per box.

<u>Code</u>	<u>Size</u>	<u>Closet Depth</u>	<u>List/ea</u>
KV1-12	12"	to 16"	\$ 67.18
KV1-16	16"	to 20"	68.95

**KV No. 3 GARMENT BRACKET**

Heavy duty garment bracket holds 6 or more garments on coat hangers. 1/2" steel rod with safety end welded to heavy steel flange. Anochrome finish. Screws included.



KV3

<u>Code</u>	<u>Size</u>	<u>Ctn</u>	<u>List/ea</u>
KV3-5.5	5-1/2" Length	10 ea.	\$ 28.16
KV3-10	10" Length	10	25.72



## CLOSET HARDWARE

### SHELF & ROD SUPPORT BRACKET



DD06-31WC

- 12-1/2" projection from mounting surface
- Overall size: 15/16" W x 10-1/4" H
- White in color

Shelf and pole bracket is normally used where pole is sagging and a double strength unit cannot be installed. Screws included.

<u>Code</u>	<u>Color</u>	<u>Ctn</u>	<u>List/ea</u>
DD06-31WC	White	20 ea.	\$ 2.94

### ADJUSTABLE SHELF & ROD SUPPORT BRACKET



DD06-32WC

- 12-1/2" projection from mounting surface
- Overall size: 15/16" W x 10-1/4" H
- White in color

For shelves up to 12" wide. Adjustable shelf and pole bracket installs either on a wall or hook strip. White. Screws are included.

<u>Code</u>	<u>Color</u>	<u>Ctn</u>	<u>List/ea</u>
DD06-32WC	White	20 ea.	\$ 5.16

### FIXED SHELF & ROD SUPPORT BRACKET



DD06-33WC

- 12-1/4" projection from mounting surface
- Overall size: 15/16" W x 10-1/2" H
- White in color

Tear drop mounting hole for easy installation. Riveted construction.

<u>Code</u>	<u>Color</u>	<u>Ctn</u>	<u>List/ea</u>
DD06-33WC	White	20 ea.	\$ 5.54

### SHELF & ROD SUPPORT BRACKET

- Available in Chrome, Dull Nickel and Oil Rubbed Bronze
- Steel, 3mm thickness
- Shelf material up to 14" deep
- Load capacity: 110 lbs.
- Rod fixing hole

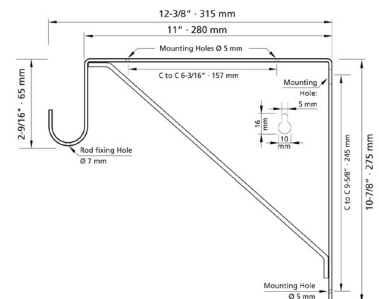
\* Screws not included

#### **For Round Rod:**

72535-DN  
Dull Nickel finish

#### **OD:**

10-7/8" H x 12-3/8" D x 1" W



Supports round rod up to 1-5/16" in diameter.  
All 10 each per Carton.

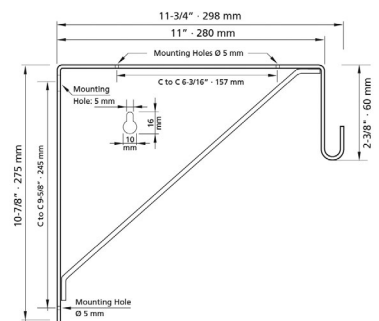
<u>Code</u>	<u>Description</u>	<u>Finish</u>	<u>List/ea</u>
72535-CR	Round Rod Support	Chrome	\$ 16.57
72535-DN	Round Rod Support	Dull Nickel	10.95
72535-ORB	Round Rod Support	Oil R Brz	11.11

#### **For Oval Rod:**

190-ORB  
Oil Rubbed Bronze

#### **OD:**

10-7/8" H x 11-3/4" D x 1" W



Supports oval rod 30 x 15mm (30X15-8, 880-8 rods)  
All 10 each per Carton.

<u>Code</u>	<u>Description</u>	<u>Finish</u>	<u>List/ea</u>
185-CR	Oval Rod Support	Chrome	\$ 12.77
188-DN	Oval Rod Support	Dull Nickel	11.61
190-ORB	Oval Rod Support	Oil R Brz	16.75



## PULL-OUT WIRE BASKETS

CB Series - Heavy Gauge Wire Baskets



Bayonet mounting



Chrome 18" x 14" Basket

Heavy-gauge pull-out wire baskets fits 32mm applications. Basket mounting & removal is fast and simple. Basket rests on top of slides, eliminating the torque twist that is inherent in other designs. Bayonet mounting system. Chrome finish. Pack: 5/Cartron.

<u>14" Depth</u>	<u>W x H</u>	<u>List/ea</u>
CB-181407CR	18" x 7"	\$ 69.74
CB-181411CR	18" x 11"	82.50
CB-181418CR	18" x 18"	101.82
CB-241407CR	24" x 7"	82.44
CB-241411CR	24" x 11"	94.62
CB-241418CR	24" x 18"	115.67
CB-301407CR	30" x 7"	89.54
CB-301411CR	30" x 11"	100.81
<u>16" Depth</u>		
CB-181607CR	18" x 7"	\$ 80.36
CB-181611CR	18" x 11"	92.76
CB-241607CR	24" x 7"	88.18
CB-241611CR	24" x 11"	118.77
CB-241618CR	24" x 18"	130.90
CB-301611CR	30" x 11"	115.05
CB-301618CR	30" x 18"	137.71
<u>20" Depth</u>		
CB-182007CR	18" x 7"	\$ 94.62
CB-182011CR	18" x 11"	107.85
CB-182018CR	18" x 18"	135.64
CB-242007CR	24" x 7"	106.12
CB-242011CR	24" x 11"	122.36
CB-242018CR	24" x 18"	149.84

## CLOSET ACCESSORIES

### CLOTH HAMPER BAGS FOR CB SERIES BASKETS

Black in Color



Hamper bag insert for use with the CB Series Baskets. Stylish black liner is made of durable, machine washable canvas, features Velcro ties and black coated handles.

Pack: 5/Cartron.

<u>Code</u>	<u>Dimensions</u>	<u>List</u>
CHBI-241618	For 24" W x 16" D x 18" H	\$ 61.15

### CLOTH LINERS FOR CB SERIES BASKETS

Cloth basket liners are machine washable and designed to fit tight and secure in Rev-A-Shelf CB Series baskets. With hook and loop fasteners. All tan in color except where noted.



<u>14" Depth</u>	<u>Dimensions</u>	<u>Color</u>	<u>List</u>
CBL-181418-T	18"W x 14"D x 18"H	Tan	\$ 46.71
<u>16" Depth</u>			
CBL-241611-B-1	24"W x 16"D x 11"H	Black	38.92

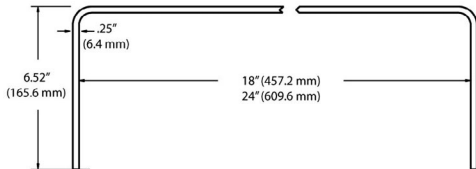


## CLOSET ACCESSORIES

### TOP MOUNT BRACKET FOR CB SERIES BASKETS



CTMB-18



This top mount bracket mounts CB Series wire baskets in openings that are not the standard 18" widths. Simply mount the bracket to the underside of a shelf and then attach the basket to the brackets. Min. opening 18-1/2".

Pack: 5 pr/Carton.

Code	Description	Min. Opening	List/pr
CTMB-18	For 18" Basket	18-1/2"	\$ 32.06

### WIRE HAMPER WITH SOFT-CLOSE SLIDES

CH Series



CH-241419-RM-217

- Two removable wire baskets and machine washable cloth liners.
- Silver polymer base
- Bottom mount full extension slides
- Soft-Open/Soft Close Rev-A-Motion™ technology
- Includes door mount brackets

24" W x 13-15/16" D x 18-7/8" H

Code	Description	List/ea
CH-241419-RM-217	Double Wire Hamper w/ 2 Canvas Liners	\$ 636.63
5CHB-LINER	Replacement Liners	27.48

5CHB-LINER  
(Sold Separately)

### TILT-OUT HAMPER BASKET

CTOHB Series



Door mount the basket to a bottom hinged cabinet for easy one step "Slide-In/Slide-Out" basket removal. 6.6mm wire, has a capacity of 55 qts for the 16" wide unit and 74 qts for the 21" wide unit. All models 13-1/2" D and 19-3/4" H.

Code	Width	Finish	List
CTOHB-161319-CR	15-1/2"	Chrome	\$ 136.88
CTOHB-211319-CR	20-1/2"	Chrome	163.83
CTOHB-161319-SN	15-1/2"	Satin Nickel	129.17
CTOHB-211319-SN	20-1/2"	Satin Nickel	141.87
CTOHB-161319-ORB	15-1/2"	Oil R Bronze	129.17
CTOHB-211319-ORB	20-1/2"	Oil R Bronze	138.71

### Removable Hamper Bags for CTOHB Baskets

Machine washable Black or Tan Cloth Liners. Fits tight with hook and loop fasteners. Strong handles.



Code	Description	List/ea
CTOHB-16-I-1	Black Liner for 16" Basket	\$ 58.95
CTOHB-21-I-1	Black Liner for 21" Basket	75.43
CTOHT-16-I-1	Tan Liner for 16" Basket	72.94
CTOHT-21-I-1	Tan Liner for 21" Basket	76.90

### REV-A SHELF SLIDE-OUT HAMPER

Removable hamper that includes detachable lid.

One 63 Qt polymer hamper with frame and full extension slides. Fully assembled.

Dimensions:  
19-7/8"W x 14"D x 24"H



HPRV-1925DMS

Code	Description	List
HPRV1925S	Slide-out hamper	\$ 196.67
HPRV-1925DMS	Slide-out hamper w/ Door mount brackets	238.40

**CLOSET ACCESSORIES****WIRE SHOE RAIL**

CSR Series



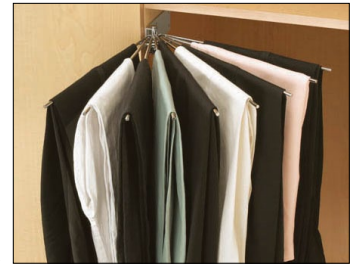
Add functionality to your closets. Available in 17", 23", 29" and 35" lengths, this shoe rail system is easy to install and features heavy gauge railing. Height: 2-1/4".

Available in Chrome, Satin Nickel and Oil Rubbed Bronze finishes. Pack: 10 ea/box.

<u>Code</u>	<u>Length</u>	<u>Finish</u>	<u>List/ea</u>
CSR-17CR	17"	Chrome	\$ 10.40
CSR-23CR	23"	Chrome	12.64
CSR-29CR	29"	Chrome	15.93
CSR-35CR	35"	Chrome	15.98
CSR-17SN	17"	Satin Nickel	9.52
CSR-23SN	23"	Satin Nickel	11.53
CSR-29SN	29"	Satin Nickel	12.64
CSR-35SN	35"	Satin Nickel	13.75
CSR-23ORB	23"	Oil R Bronze	11.53

**WIRE FAN PANTS RACK**

CPRF Series



CPRF-16CR

Chrome plated fan pants rack. Simple installation via the system holes, universal left or right side wall mounting. For an 18" width x 16" deep opening. An easy way to add storage for nine pairs of pants. Rubber O-rings keep pants from slipping, polished ends prevent snagging.

<u>Code</u>	<u>Description</u>	<u>List/ea</u>
CPRF-16CR	Pants rack, Chrome	\$ 57.84

**SOLID WOOD DISPLAY PANTS RACK**

CWPR Series



CWPR Pants Rack  
24", 30"

These pull-out racks feature full-extension slides, rubber O-rings to prevent slipping and removable pant rods for ease of use. Made from solid birch/maple. Removable front for drawer head mounting. All models 14-3/8" deep and 6" high. Clear Finish.

Pants rack comes in a 24" or 30" width and has space for 18 standard or 12 Big & Tall pants. Removable pant rods for ease of use.

<u>Code</u>	<u>Description</u>	<u>Width</u>	<u>List/ea</u>
CWPR-2414	24" Pants Rack	24"	\$ 191.59
CWPR-3014	30" Pants Rack	30"	211.65



## CLOSET ACCESSORIES



### PULL-OUT PANTS RACK

#### PSC Series

- Heavy gauge chrome
- Pull-out frame with moveable 'fingers' for easy access
- Full extension slides

14" Depth, 3" Height

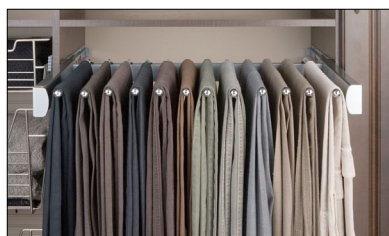


<u>Code</u>	<u>Width</u>	<u>Capacity</u>	<u>List/ea</u>
PSC-1814CR	17-1/2" - 18-1/8"	9 pair	\$ 137.97
PSC-2414CR	23-3/4" - 24-1/2"	13 pair	168.56
PSC-3014CR	29-3/4" - 30-1/2"	16 pair	210.78

### PULL-OUT PANTS RACK

#### PSCSL Series

- 2 available widths: 24" and 30"
- 14" deep non-slip hanger arms per rack
- Full extension, soft-closing, ball-bearing steel slides

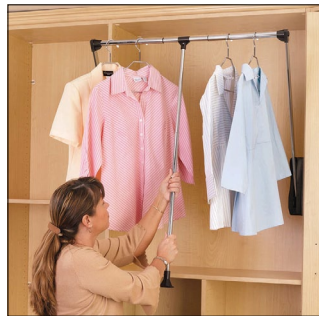


14" Depth, 2-1/2" Height

<u>Code</u>	<u>Width</u>	<u>Finish</u>	<u>List/ea</u>
PSCSL-2414SC-SN-1	24", 12 arms	Sat Nickel	\$ 327.83
PSCSL-3014SC-SN-1	30", 15 arms	Sat Nickel	376.75

### PULL-DOWN CLOSET ROD

#### CPDR Series



CPDR-2635



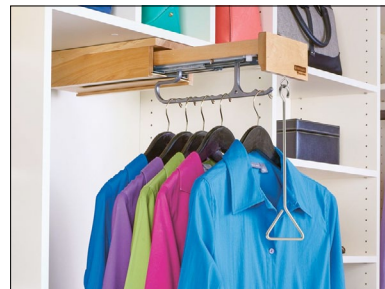
Pull-Down Closet Rod is available in 3 sizes and features an adjustable rod length to accommodate openings from 18" to 26" (CPDR-1826), 26" to 35" (CPDR-2635) and 35" to 48" (CPDR-3548). The telescoping pull-rod adjusts from 34" to 50" to accommodate universal design and handi-cap accessible applications. Chrome and black.

<u>Code</u>	<u>Description</u>	<u>List/ea</u>
CPDR-1826	21-1/2" - 26"	\$ 206.41
CPDR-2635	26" - 35"	205.68
CPDR-3548	35" - 48"	212.98

### GLIDEWARE VALET HANGER PULL-OUT

#### GLD-CV Series

- Designed for 14" depth closet cabinets
- Solid wood maple construction
- Full extension, 110 lb, soft-close slides
- Chrome valet rail with scallops
- Mounts to ceiling and rear
- Push/pull bar included



6" W X 14" D X 16-3/16" H

<u>Code</u>	<u>Description</u>	<u>List/ea</u>
GLD-CV14B-1	Hanger pull-out, soft-close	\$ 263.30



## CLOSET ACCESSORIES

### JEWELRY DRAWERS

CJD Series



Shown drawer front mounted with multiple jewelry drawers / inserts.

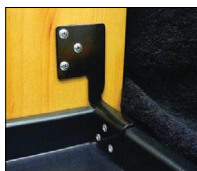
CJD-24IN  
 (w/ Necklace Insert)



CJD-24IS  
 (w/ Jewelry Insert)

Keeps jewelry organized; easily installed with system holes and features black full-extension ball-bearing slides. Drawer head mounting capability. Use in coordination with the CJD-24IS (Jewelry) and CJD-24IN (Necklace) inserts.

These unique inserts store large items like necklaces without tangling. The curved inside radius allows full access to small items such as earrings and rings. Inserts feature "drop-in" installation and a soft, velvet flocked covering.



Optional Drawer Front Mount Kit (Sold Separately).

CJD-DMB-KIT

Code	Dimensions
CJD-2414	24" W x 14" D x 1-7/8" H
CJD-24IS	22" W x 13" D x 1-1/2" H
CJD-24IN	22" W x 13" D x 1-1/2" H

Code	Description	List
CJD-2414	Jewelry Drawer w/Slides	\$ 105.52
CJD-24IS	Jewelry Insert	76.41
CJD-24IN	Necklace Insert	77.65
CJD-DMB-KIT	Drawer Front Mount Brkt	6.44

### PULL-OUT CLOSET MIRROR

CMSL Series



Pulls out smoothly and swivels 90°



This Pull-out Swivel Closet Mirror makes space where none exists for a wardrobe mirror. Fastening to a side wall or a panel, mirror uses only 3" of horizontal storage space, about the same as a stowed ironing board tucked away. When needed, pull out on full-extension, soft-close ball-bearing slides and then swivel 90° to face you. When you are finished viewing, simply pivot it back and give it a nudge to return it to its hiding place.

- Full body image when standing 24" from the mirror
- Adjustable height to meet the viewer's needs
- Fits any partition at least 14" deep and 8" wide
- Allow 5.75" for swiveling clearance
- Pulls out smoothly and swivels 90 degrees
- Can be installed behind cabinet doors
- Universal, non-handed
- Soft-close retracting mechanism requires only a gentle push

Dimensions:  
 1-7/8" W x 13" D x 48" H

Code	Finish	List/ea
CMSL-1448-SM-1	Silver Mist	\$ 500.45

CLOSET ACCESSORIES



STANDARD VALET ROD

CVL Series

12" Length



12" Standard Valet Rod installs easily with only four screws. Offered in Chrome, Satin Nickel, and Oil Rubbed Bronze, and features unique removable pull for easy customization to your current closet hardware. (8/32" thread)

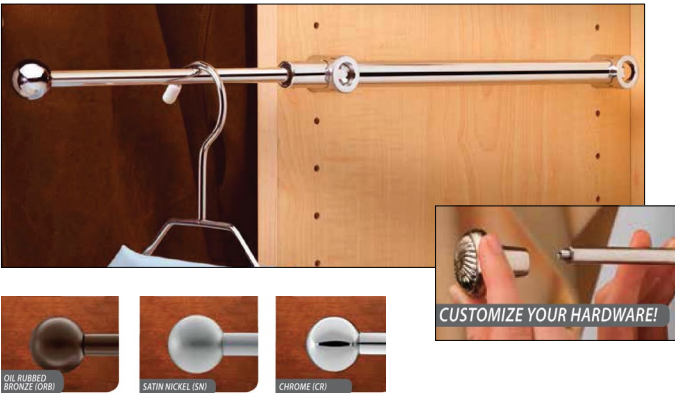
Rod Dimensions: 11-7/8" to 17-7/8" Length.

Code	Finish	List/ea
CVL-12CR	Chrome	\$ 27.62
CVL-12SN	Satin Nickel	26.01
CVL-12ORB	Oil R Bronze	26.01

DESIGNER VALET ROD

CVR Series

14" Length



Designer Valet Rod has an 8-3/16" telescoping rod. For 14" depth closet panels. Adjustable mounting bracket for various system hole applications. Removable knob to customize hardware (8/32" thread)

Rod Dimensions: 13-7/8" to 21-7/8" Length.

Code	Finish	List/ea
CVR-14CR	Chrome	\$ 43.23
CVR-14SN	Satin Nickel	40.50
CVR-14ORB	Oil R Bronze	40.50

POP-OUT VALET ROD

CVLPOSL Series

14" Length

- One-touch pop-out mechanism
- Fits panel depths of 14" or greater
- 10mm dia. rod extends 7.5"
- Holds up to 35 lbs.

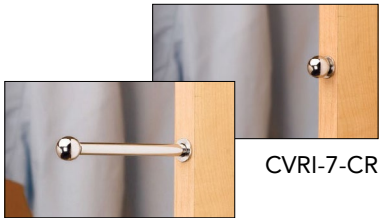


Code	Finish	List/ea
CVLPOSL-14-CR-1	Chrome	\$ 73.44
CVLPOSL-14-SN-1	Satin Nickel	103.66

INSERT VALET ROD

CVRI Series

Rod can open or close the 3-1/3" with a single finger. Fits within 3/4" and larger closet panels.



Dimensions: 3-3/4" - 7-3/8" L. Chrome or Satin Nickel.

Code	Description	Finish	List/ea
CVRI-7-CR	Insert Valet Rod	Chrome	\$ 26.63
CVRI-7-SN	Insert Valet Rod	Satin Nickel	25.77



## CLOSET ACCESSORIES

### CLOSET ORGANIZERS

CTR / CBSR Series



CTR - Tie/Scarf Organizer



CBSR - Belt/Scarf Organizer

Easily installs  
 with two Euro  
 screws.



Tie/Scarf Organizer holds up to 15 ties or scarves and Belt Organizer holds up to six belts. Both feature clear non-slip soft PVC coated hooks. Fully accessible 8-3/16" telescoping rod. For 14" depth closet panels. Adjustable mounting bracket for various system hole applications. Removable knob to customize hardware (8/32" thread).

Rod Dimensions: 13-7/8" to 21-7/8" Length.

Code	Organizer	Finish	List/ea
CTR-14CR	Tie/Scarf	Chrome	\$ 80.25
CTR-14ORB	" "	Oil R. Bronze	76.53
CBSR-14CR	Belt/Scarf	Chrome	62.73
CBSR-14SN	" "	Satin Nickel	60.79
CBSR-14ORB	" "	Oil R. Bronze	63.55

### PULL-OUT SIDE MOUNT TIE RACK

TRC Series



- Holds up to 25 ties
- Full extension ball-bearing slide



- Available in Chrome, Satin Nickel or Oil Rubbed Bronze

Dimensions:

2-1/2" W x 14" D x 1-7/8" H

Code	Finish	List/ea
TRC14CR	Chrome	\$ 36.28
TRC-14SN	Satin Nickel	34.55
TRC-14ORB	Oil R Bronze	34.56

### PULL-OUT SIDE MOUNT BELT RACK

BRC Series



BRC-14  
 Belt Rack w/  
 Nine hooks

Pull-out belt storage system - available in three finishes. Designed to hold belts neatly, is completely accessible and fits any 14" depth closet application.

Dimensions:

2-1/2" W x 14" D x 1-7/8" H

Code	Finish	List/ea
BRC-14CR	Chrome	\$ 39.68
BRC-14SN	Satin Nickel	31.12
BRC-14ORB	Oil R Bronze	33.26



## HOOKS

## SUGATSUNE

### STAINLESS STEEL HOOKS

Mirror finish and supplied with stainless steel screws



Load Cap: 44 lbs.

<u>Code</u>	<u>Overall Proj.</u>	<u>Ht</u>	<u>Pk</u>	<u>List/ea</u>
EL25*	1-1/16"	1-7/16"	60	\$ 14.15
EL30	1-5/16"	2-3/16"	40	19.21

EL Series

\*Special Order when out.



Load Cap: 44 lbs.

<u>Code</u>	<u>Overall Proj.</u>	<u>Ht</u>	<u>Pk</u>	<u>List/ea</u>
EP25	1"	1"	30	\$ 14.15
EP40	1-5/16"	1-3/8"	20	11.93

EP Series



FC Series

<u>Code</u>	<u>Proj.</u>	<u>Ht</u>	<u>Load Cap</u>	<u>Pk</u>	<u>List/ea</u>
FC50	1-7/8"	1-1/2"	22 lbs.	30	\$ 18.20
FC65	2-9/16"	1-3/4"	26	20	21.23

### STAINLESS STEEL HOOKS

Polished stainless steel finish



TY Series

<u>Code</u>	<u>Hook Proj.</u>	<u>Hook Ht</u>	<u>Screw Length</u>	<u>Load Cap</u>	<u>Ctn</u>	<u>List/ea</u>
TY-25	1-1/16"	11/16"	13mm	6.6 lbs	100	\$ .71
TY-30	1-7/32"	13/16"	15mm	15.4	100	.81
TY-35-15	1-7/16"	15/16"	20mm	15.4	50	1.11
TY-40-15	1-23/32"	1-1/16"	20mm	17.6	50	1.52



TF Series

<u>Code</u>	<u>Hook Proj.</u>	<u>Hook Ht</u>	<u>Screw Length</u>	<u>Load Cap</u>	<u>Ctn</u>	<u>List/ea</u>
TF-20	13/16"	13/16"	11mm	6.6 lbs	200	\$ .71
TF-30	1-5/32"	1-1/32"	15mm	15.4	100	1.31
TF-35	1-5/8"	1-3/8"	20mm	26	50	1.72



TL Series

<u>Code</u>	<u>Hook Proj.</u>	<u>Hook Ht</u>	<u>Screw Length</u>	<u>Load Cap</u>	<u>Ctn</u>	<u>List/ea</u>
TL-20	29/32"	25/32"	11mm	11 lbs	100	\$ .71
TL-30	1-5/32"	1"	15mm	11	100	1.01
TL-40	1-19/32"	1-11/32"	20mm	26	50	1.82

### STAINLESS STEEL SWING HOOKS

With Friction



- Swivels 180 degrees
- Hook has constant torque when swiveling
- Ideal for vibration or shock applications
- Screws included
- Polished stainless steel finish

<u>Code</u>	<u>Overall Ht</u>	<u>Proj</u>	<u>Overall Width</u>	<u>Load Cap</u>	<u>Ctn</u>	<u>List/ea</u>
TK-30F	.57"	1-27/64"	1-3/8"	26 lbs	100	\$ 4.35
TK-45F	.76"	1-3/4"	1-3/8"	17	100	4.75

**CLOSET HOOKS****BERENSON COAT HOOKS**8012-BPN-P  
Brushed NickelHeight: 4"  
Width: 3/8"  
Proj: 3-1/16"8016-VB-P  
Verona Bronze

<u>Code</u>	<u>Finish</u>	<u>List/ea</u>
8012-BPN-P	Brushed Nickel	\$ 12.61
8016-VB-P	Verona Bronze	20.06

**IVES SINGLE WARDROBE HOOK**Base: 1-1/8" x 1-1/8"  
Proj: 1-11/16"

<u>Code</u>	<u>Finish</u>	<u>Ctn</u>	<u>List/ea</u>
SP581A92	Aluminum	25 ea	\$ 2.12
SP581A3	Polished Brass	25	1.42

**IVES DOUBLE WARDROBE HOOK**Base: 1-1/8" x 1-1/8"  
Proj: 1-1/8"

<u>Code</u>	<u>Finish</u>	<u>Ctn</u>	<u>List/ea</u>
SP582A92	Aluminum	25 ea	\$ 2.31
SP582A3	Polished Brass	25	2.65

**IVES COAT HOOKS**

Cast Metal

Base: 1-3/4" H x 1-1/4" W  
Proj: 3"

<u>Code</u>	<u>Finish</u>	<u>Ctn</u>	<u>List/ea</u>
SP571A92	Aluminum	25 ea	\$ 1.70
SP571A3	Polished Brass	25	1.82
SP571A5	Antique Brass	25	2.54
571AW	White	10	2.95

**PEGS****IVES CEILING HOOK**Base: 1" H x 1-7/8" W  
Proj: 2-1/4"

<u>Code</u>	<u>Finish</u>	<u>Ctn</u>	<u>List/ea</u>
SP580A92	Aluminum	25 ea	\$ 3.15
SP580A3	Polished Brass	25	2.74

**WOODEN  
HANGING PEGS**

Hardwood Shaker Pegs, unfinished. An ideal peg for hanging coats, hats, etc. Overall Length: 3-1/2". Head Dia: 1", Base Dia: 3/4", Stem Dia: 1/2".

<u>Code</u>	<u>Packaging</u>	<u>Ctn</u>	<u>List/bg</u>
CP4	2 ea/ polybag	12 bgs	\$ 3.52

Oak Shaker Pegs:

CP9	1 ea/ polybag	12 bgs	\$ 4.52
-----	---------------	--------	---------

Mini Shaker Pegs: O/A Length: 2"

CP11	3 ea/ polybag	12 bgs	\$ 3.52
------	---------------	--------	---------

**SHAKER PEGS**

Birch wood. 100/box.



<u>Code</u>	<u>Size</u>	<u>List/C</u>
HP-1BIR	3-1/2" x 7/8" x 1/2" stem	\$ 40.36
CP-1BIR*	5-1/8" x 1-1/4" x 3/4" stem	92.00

\*disc when out

**SCREW-ON  
SHAKER PEGS**

Birch wood. 100/box.



<u>Code</u>	<u>Size</u>	<u>List/C</u>
HP-1SCR	3-1/2" x 7/8" x #10 screw	\$ 117.22



## HANDRAIL BRACKETS

### IVES HANDRAIL BRACKETS



Code	Size	Base to Center of rail
059	2-1/4"H x 1-3/8"W	2-7/16"
59	2-13/16"H x 1-1/2"W	2-3/4"

#### Plated Steel. Polybagged with screws

Code	Finish	Ctn	List/ea
59A10B	Oil R Bronze	10 bgs	\$ 8.48
59A15	Satin Nickel	10	7.00
SP59A3	Polished Brass	15	6.41
SP59A92	Aluminum	15	5.81
059AW	White	10	6.63
SP059A92	Aluminum	20	5.03
059A10B	Oil R Bronze	20	4.23
SP059A3	Polished Brass	20	5.14

#### Solid Brass

Code	Finish	Ctn	List/ea
59MB26	Polished Chrome	10 ea.	\$ 28.51
59MB15	Satin Nickel	10	29.72
59MB3	Polished Brass	10	28.11
059B15	Satin Nickel	10	53.45
SP059B10B	Oil R Bronze	10	34.48

### PARKER HANDRAIL BRACKET

#### Solid Brass

Solid cast brass handrail brackets. Projection is 3".  
For 2" O.D. tubing.

Includes 3" projection stud.  
Polished Brass finish.



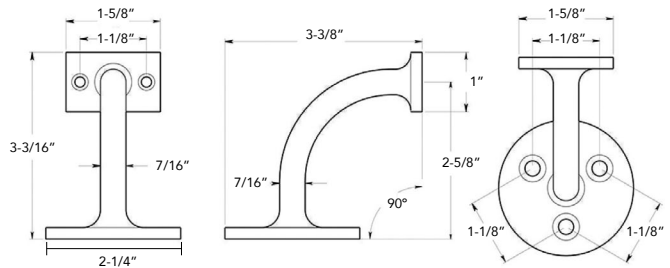
Code	Finish	Ctn	List/ea
180S-2	Polished Brass	5	\$ 41.36

### DELTA HANDRAIL BRACKETS

#### Solid Brass - For Flat Rail

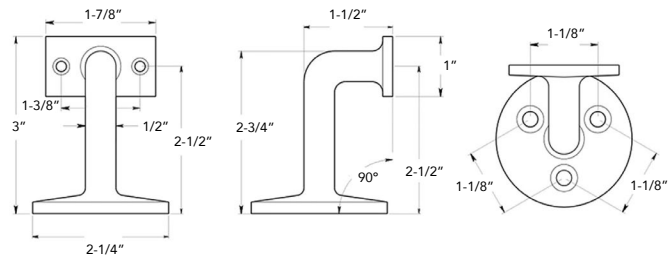
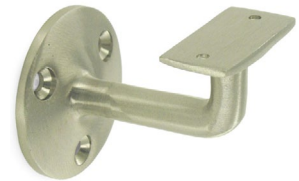
#### HRC175

Projection: 3-3/16"  
Base Size: 2-1/4" Dia.



#### HRC253

Projection: 3"  
Base Size: 2-1/4" Dia.

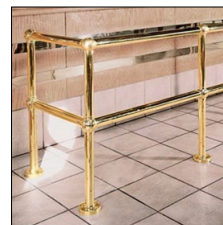


Code	Finish	Proj.	List/ea
HRC175U15	Satin Nickel	3-3/16"	\$ 48.19
HRC175U10B	Oil R Bronze	3-3/16"	48.19
HRC253US3	Pol. Brass	3"	34.21
HRC253U15	Satin Nickel	3"	36.36

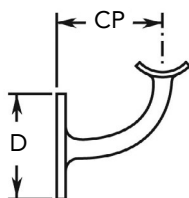
**LAVI****BAR RAILING****LAVI SOLID BRASS****BAR RAILING AND FITTINGS**

All in Polished Brass Finish. Screws included.

Stainless Steel available Special Order.

**BRASS RAILING**Polished brass finish.  
.050 thickness. 1-1/2" or 2"  
O.D. Available in 6' or 12'  
lengths only.

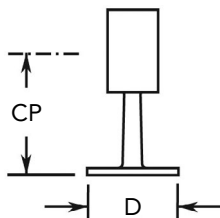
Code	O.D.	Length	List/ea
A110-00-6	1-1/2"	6'	\$ 268
A110-00-12	1-1/2"	12'	524
A120-00-6	2"	6'	388
A120-00-12	2"	12'	766

**HANDRAIL BRACKET**112 for  
1-1/2" rail.  
2 for 2" rail.

Code	CP	D	List/ea
301-112	2-3/4"	2-1/2"	\$ 39
301-2	2-5/8"	2-1/2"	41

**FLUSH END POST**

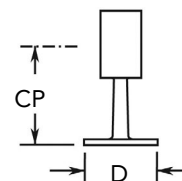
(Closed End)

112 for  
1-1/2" rail.  
2 for 2" rail.

Code	CP	D	List/ea
340-112	2-7/16"	2-5/16"	\$ 41
340-2	3-1/4"	2-1/2"	43

Recommended: Footrail bracket every 3' of rail.  
Handrail bracket every 3-4' of rail.**FLUSH  
CENTER POST**112 for  
1-1/2" rail.

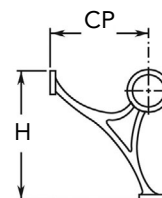
2 for 2" rail.



Code	CP	D	List/ea
342-112	2-7/16"	2-5/16"	\$ 40
342-2	3-1/4"	2-1/2"	45

**FOOTRAIL BRACKET**112 for  
1-1/2" rail.

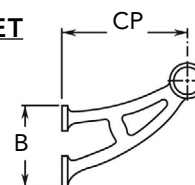
2 for 2" rail.



Code	CP	H	List/ea
400-112	6-1/8"	6-1/4"	\$ 51
400-2	6-3/8"	7"	77

**BAR MOUNT BRACKET**112 for  
1-1/2" rail.

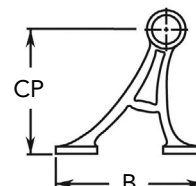
2 for 2" rail.



Code	CP	B	List/ea
402-112	6-1/16"	4"	\$ 62
402-2	6-7/8"	4-1/4"	73

**FLOOR BRACKET**

For 2" rail.



Code	CP	B	List/ea
404-2	8-3/8"	4-11/16"	\$ 65



## BAR RAILING

## LAVI

### LAVI SOLID BRASS

#### BAR RAILING AND FITTINGS

All in Polished Brass Finish. Screws included.

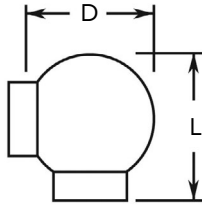
**Stainless Steel available Special Order.**



#### BALL ELBOW

112 for  
1-1/2" rail.

2 for 2" rail.



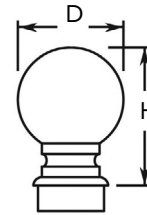
List/ea

Call

\$ 55

#### BALL FINIAL

112 for 1-1/2" rail.  
2 for 2" rail.



List/ea

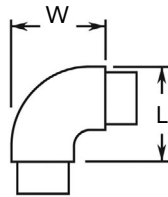
\$ 55

61

#### FLUSH RADIUS ELBOW

112 for  
1-1/2" rail.

2 for 2" rail.



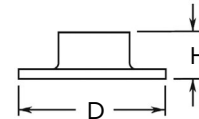
List/ea

\$ 62

62

#### WALL FLANGE

112 for 1-1/2" rail.  
2 for 2" rail.



List/ea

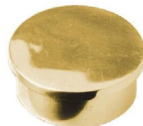
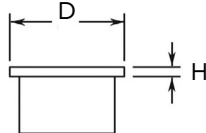
\$ 23

33

#### FLUSH END CAP

112 for  
1-1/2" rail.

2 for 2" rail.



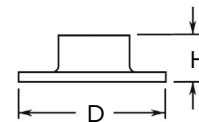
List/ea

\$ 10

18

#### FLOOR FLANGE

112 for 1-1/2" rail.  
2 for 2" rail.



List/ea

\$ 35

37



## MACK WALLBEDS

The MACK EUROBED™ is a fully adjustable progressive tensioning bed mechanism of commercial quality. Frames are shipped fully assembled so minimal shop time is required. Easy to install - all installation hardware is included.

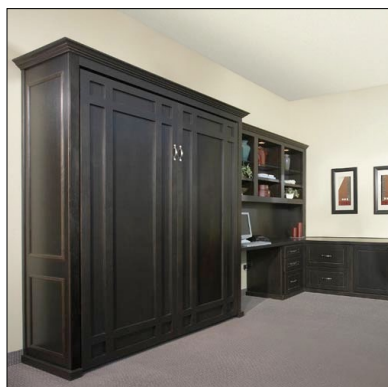
All frames are shipped with a fine quality innerspring mattress designed to meet weight specifications of the bed frame, mattress & bedface when installed. Mattress rests on steam-bent, laminated birch slats. The slats offer more support than a box spring and are just as comfortable. You can leave your sheets, blankets and pillows on the bed when you close it.

Sizes available: Twin, Twin X-long, Full, Full X-long and Queen.

Frame colors available: Black (BL), White (WH), Almond (AL), and Terra Cotta (TC). All with matching vinyl pillow pad.



(Cabinetry not included)



(Cabinetry not included)

12

### Net Clear Opening Requirements (Recess Depth is Minimal at 18-5/8")

<u>Code</u>	<u>Size</u>	<u>Opening Width</u>	<u>Opening Height</u>	<u>Min. Recess Depth</u>	<u>Projection from Face of Cabinetry when Open</u>	<u>List</u>
4182*	Twin	41"	78-7/8"	18-5/8"	68-3/8"	\$ 4662
4187*	Twin Long	41"	83-7/8"	18-5/8"	73-5/16"	4845
5682*	Full	56"	78-7/8"	18-5/8"	68-3/8"	4845
5687*	Full Long	56"	83-7/8"	18-5/8"	73-5/16"	5100
6387*	Queen	62-1/2"	83-7/8"	18-5/8"	73-5/16"	5100

Upgrade to Royal Plush Mattress: add \$ 200 List

Upgrade to Silver Plush Mattress: add \$ 224 List

Upgrade to Temperselect Mattress: add \$ 933 List

Indicate Frame Color: BL, WH, AL or TC

\* **Special Order.** F.O.B. Petaluma, CA. Most items 1 to 3 week lead time. (Twin Long, Full Long and black frames 3 to 6 weeks.) Construction video tape and shop site demos available.

COMMERCIAL BATHROOM ACCESSORIES
AMER SPEC INC

AUTOMATIC ROLL PAPER TOWEL DISPENSER

Special Order



Proximity sensing no-touch unit dispenses pre-set lengths per cycle from 8" or 9" (205 or 230 mm) wide, 800' (244 m) long rolls. Battery operated (4) D-size.

Overall Size  
13" X 17-3/4" X 10"

Code

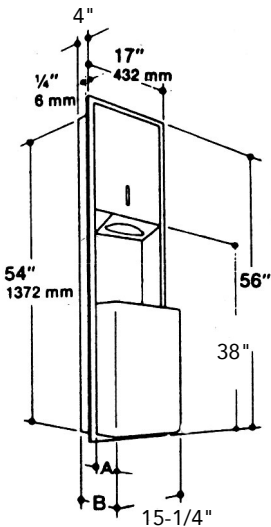
Description

8523A\*
Automatic Paper Towel Dispenser

Call for Price

COMBINATION PAPER TOWEL DISPENSER & DISPOSAL

Special Order



Recessed for 4-1/4" wall depth. Door and frame are 22 gauge stainless steel, satin finish. Capacity: 600 C-fold or 800 multi-fold towels. Waste Container: 12 gallons. A: 4-1/4", B: 8-1/4". Wall opening: 15-3/4" x 54-1/2" x 4-1/4".

Code

Description

0469\*
Combination Paper Towel Dispenser & Disposal

Call for Price

PAPER TOWEL DISPENSER

Special Order



Surface mounted, 22 gauge stainless steel, satin finish with tumbler lock. Capacity: 400 C-fold or 525 multi-fold towels. Fitted with tumbler lock and heavy duty stainless steel piano hinge.

Overall Size  
11" x 14 5/8" x 4 1/16"

Code

Description

0210\*
Paper Towel Dispenser

Call for Price

TOILET SEAT COVER DISPENSER

Special Order



Surface Mounted, 22 gauge Stainless steel, satin finish. Capacity: 250 covers.

Overall Size  
15-3/4"W x 11-1/4"H x 2-5/8"D

Code

Description

0477-SM\*
Seat Cover Dispenser

Call for Price

FEMININE NAPKIN DISPOSAL

Special Order



Surface Mounted, 22 gauge stainless steel with satin finish. Sloping cover mounted w/ piano hinges. Capacity: .9 gallons (.12 cu ft.)

Overall Size  
7-1/2" W X 10" H x 3-7/8" D

Code

Description

0852\*
Feminine Napkin Disposal

Call for Price

**AMER SPEC INC****COMMERCIAL BATHROOM ACCESSORIES****SOAP DISPENSERS**

Special Order



# 0345

Stainless Steel, #4 satin finish. All purpose soap valve and unbreakable refill window. Concealed fastening and hinged filler-top. Capacity: 40 fluid ounces (1.2 L).

**0345 Horizontal Soap Dispenser**

Overall size: 8-1/8" W x 4-3/4" H x 4" projection.

**0347 Vertical Soap Dispenser**

Overall size: 4-3/4" W x 8-1/8" W x 5-1/4" projection.

<u>Code</u>	<u>Description</u>
0345*	Horizontal Soap Dispenser
0347*	Vertical Soap Dispenser

**Call for  
Price****AUTOMATIC FOAM SOAP DISPENSER**

Special Order

A foam drop is dispensed out of the nozzle on unit bottom each time its battery-operated sensor is activated. Capacity: 34 oz. (1000 ml) of liquid foaming soaps within a wide range of viscosity.

5 1/2" x 10 7/8" x 4" projection.



# 20365

<u>Code</u>	<u>Description</u>
20365*	Foam Soap Dispenser

**Call for  
Price****TRI-Umph™ HIGH-SPEED HAND DRYER**

Special Order

Overall Size

12-43/64" W x 23-1/8" H x  
7-3/4" D

# 20200

- Quick drying — about 12 seconds
- Ergonomic — No need to bend over or bend knees
- Air blows down and back from vents on three sides
- No water splash-back: water from hands is pushed backwards onto absorbent ceramic plate...not the floor
- Ultra hygienic — Over 99% of airborne bacteria is eliminated with the three-layer, removable Super Filter System, consisting of a HEPA filter, a carbon filter and an anti-microbial filter. Anti-microbial silver sodium added to the ABS cover provides an additional layer of germ protection
- Owner-adjustable heater (on or off) and air flow

<u>Code</u>	<u>Description</u>
20200-1*	High Speed Hand Dryer, 110 - 120V
20200-2*	High Speed Hand Dryer, 208 - 240V

**Call for  
Price**

12

AMER SPEC INC

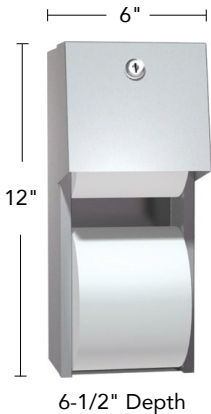
COMMERCIAL BATHROOM ACCESSORIES

DUAL ROLL  
TOILET TISSUE DISPENSER

Special Order

Surface Mounted  
Stainless Steel

Holds two rolls up to  
5-1/4" dia. Stainless Steel  
cabinet. Theft resistant  
spindles.



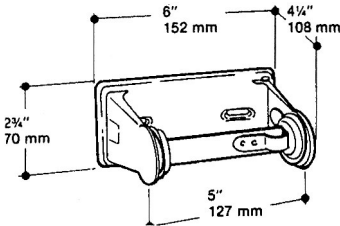
Code	Description
0030*	Tissue Dispenser

Call for  
Price

SINGLE TOILET TISSUE HOLDER

Special Order

Surface Mounted  
Chrome Plated Steel.  
With vandal resistant  
locking device.



Code	Description
0710*	Single Roll Holder

Call for  
Price

DOUBLE TOILET TISSUE HOLDER

Special Order



Surface mounted. Plated steel with a bright chrome  
finish. Heavy duty brake springs provide controlled  
delivery. Vandal resistant locking device.  
Overall: 12-3/8" L x 2-3/4" H x 4-1/4" D

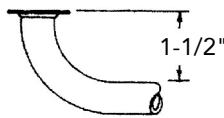
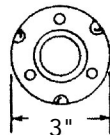
Code	Description
0715*	Double Roll Holder

Call for  
Price

COMMERCIAL GRAB BARS

In Stock

Stainless Steel



ADA

Projection from wall: 1-1/2", Flange Dia: 3"

- Type 304 Satin Stainless Steel Bar with .050" wall thick-  
ness (18 Gauge)
- Mounting flanges with .073" wall thickness (14 Gauge)
- Flanges are 3" Diameter with 3 hole mounts
- 2" Stainless Steel mounting screws
- 1-1/2" wall clearance on all bars to meet ADA Code  
Requirements
- Tested to withstand 1000 lbs. Pull/Push when properly  
installed

Code	Size	List/ea
BGBSS-1218E	18"	\$ 46.77
BGBSS-1224E	24"	56.81
BGBSS-1230E	30"	43.11
BGBSS-1236E	36"	51.23
BGBSS-1242E	42"	55.92
BGBSS-1248E	48"	56.17

STAINLESS STEEL CHANNEL  
FRAMED MIRROR

Special Order

0620 - Without Shelf

0625 - With Shelf

Both models have a glass  
mirror surrounded by a 20  
gauge stainless steel frame.



The #0625 has an 18 gauge stainless steel 5" wide  
shelf and is supplied with mounting brackets.

Code	Size
0620-1620*	16" W x 20" H
0620-1624*	16" W x 24" H
0625-1624*	16" W x 24" H w/ shelf

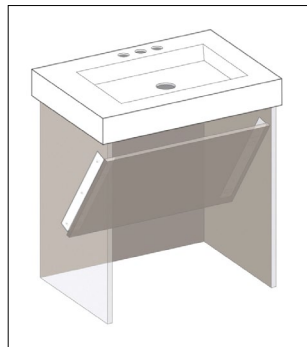
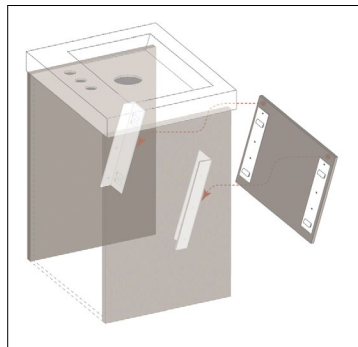
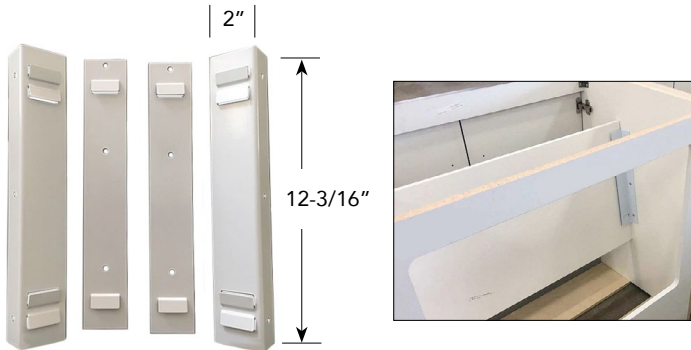
Call for  
Price

## MODESTY PANELS

### ADA MODESTY PANEL BRACKET



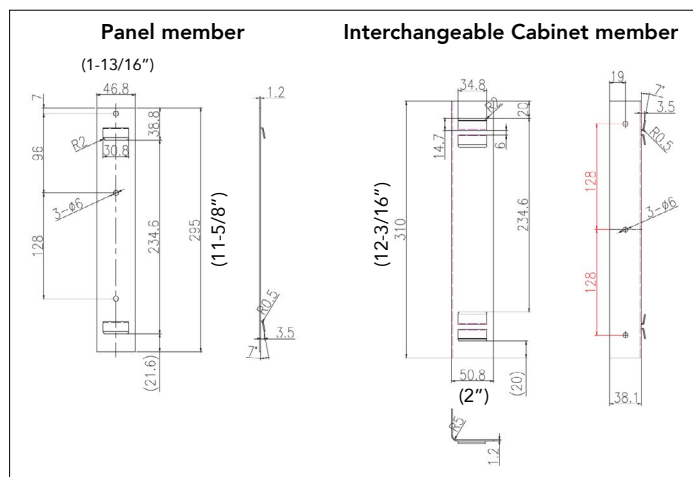
- Powder coated white
- Works with ADA plumbing panel
- Lift and pull to remove for easy access to plumbing
- 2mm adjustment side to side
- Uses 5mm Euro Screw
- Sold per set (4 individual members) - one set will mount one panel



### Examples of installed Modesty Panels

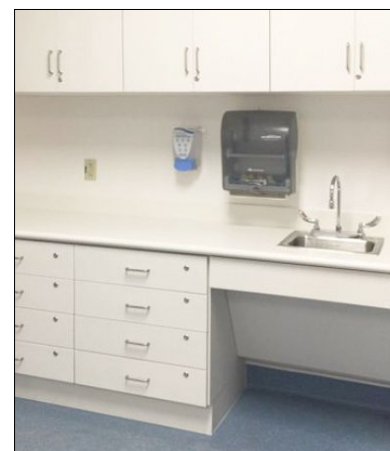


12



Sold per set. One set will mount one panel.

Code	Description	List/st
MPB-WH	Modesty Panel Bracket, Wht	\$ 23.25



TOE KICKS

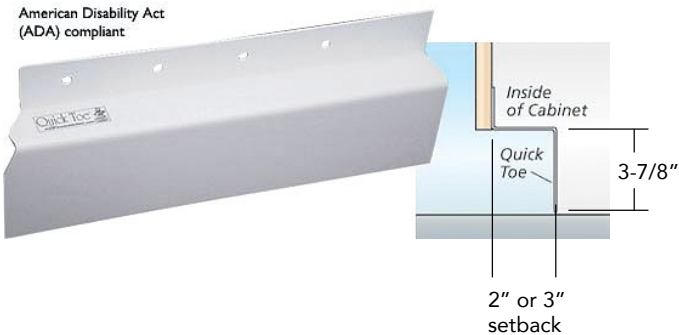
TOE KICK FOR ADA SINK BASE DOORS

Prefabricated



Pre-manufactured recessed toe kick for ADA sink base doors. Made of durable, lightweight polystyrene. ADA compliant. 1/4" adjustment in all directions to reflect door gap distances, floor and floor covering conditions.

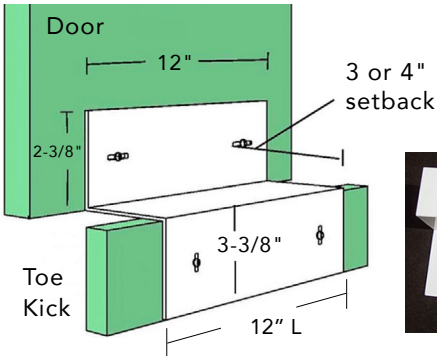
Trimable up to 6" each door side at hinge end. White finish, but can be laminated, painted, or covered with rubber or vinyl toe base. Available in 2" or 3" setback. Sold in sets of 1 right and 1 left hand toe kick. White trusshead screws included.



	Inside Cabinet			
Code	Side-to-Side Total Width	Trimable To Fit Openings	Setback	List/set
TK36-2	34-1/2"	36" down to 24"	2"	\$ 42.45
TK36-3	34-1/2"	36" down to 24"	3"	42.45
TK48-2	46-1/2"	46" down to 36"	2"	53.71
TK48-3	46-1/2"	46" down to 36"	3"	48.83

ADA TOE KICKS

White Powder Coated Steel



The setback is measured from the back of the door to the back of the toekick.

This 18 gauge steel powder coated bracket allows the toe kick to swing out with the cabinet door allowing unimpeded access for wheel chairs to sink, counter, desk, or other work areas.

The toe kick allows for the same material as the cabinets creating a truly professional quality job without complicated joinery. This fully adjustable bracket provides a quick, strong, and inexpensive solution. Available in two offsets of 3" and 4" to allow for different toe kick depths.

Code	Description	List/pr
TK3-WH	ADA Toe Kick, 3" Setback	\$ 29.32
TK4-WH	ADA Toe Kick, 4" Setback	32.35